

Modification of Development Consent

Section 4.55(1A) of the *Environmental Planning and Assessment Act 1979*

As delegate of the Minister for Planning and Public Spaces, under delegation executed on 26 April 2021, I approve the modification of the development consent referred to in Schedule 1, subject to the conditions in Schedule 2.


Joanna Bakopanos
A/Director
Industry Assessment

Sydney

4 May 2021

File : EF21/2471

SCHEDULE 1

Development Consent: SSD 10397 granted by the Executive Director, Regions, Industry and Key Sites on 9 April 2020

For the following: Oakdale West Estate Stage 2 Development including construction, subdivision, fit out, operation and use of a four level automated warehouse, associated office space, internal roads and parking

Modification 2

Modification Application: SSD-10397-Mod-2

Modification:

- Construction of 2 solar energy inverter enclosures on the northern and southern elevations respectively for approved Warehouse 2B. Increase in perimeter security fence height from 2.1 m to 2.4 m.

Applicant: Goodman Property Services (Aust) Pty Ltd

Consent Authority: Minister for Planning and Public Spaces

The Land: 2 Aldington Road, Kemps Creek (Lot 11 DP 1178389)

SCHEDULE 2

This consent is modified as follows:

In the definitions

1. Insert the following definition in alphabetical order:

MOD 2 The modification application and supporting documentation, including SSD 10397 MOD 2, Oakdale West Stage 2 – S.4.55(1A) Application to Modify Architecture Plans and Condition B8 dated 4 March 2021

In Part A: Administrative Conditions

2. Renumber existing conditions A2(e) to A2(f) as conditions A2(f) to A2(g)
3. Insert new condition A2(e) immediately after Condition A2(d)

(e) in accordance with MOD 2;

In Part B: Environmental Performance Conditions

4. In Condition B8, delete the number 2.1 and replace with 2.4, and insert the words “and coloured dark grey or black” after the words “open style”.

In the Appendices

5. In Appendix 1, delete architectural plans in Figures 2 and 3 and replace with new Figures 2, 3, 4 and 5 as shown in Attachment A of this modifying instrument.

ATTACHMENT A – Development Layout Plans



DA MODIFICATION 2

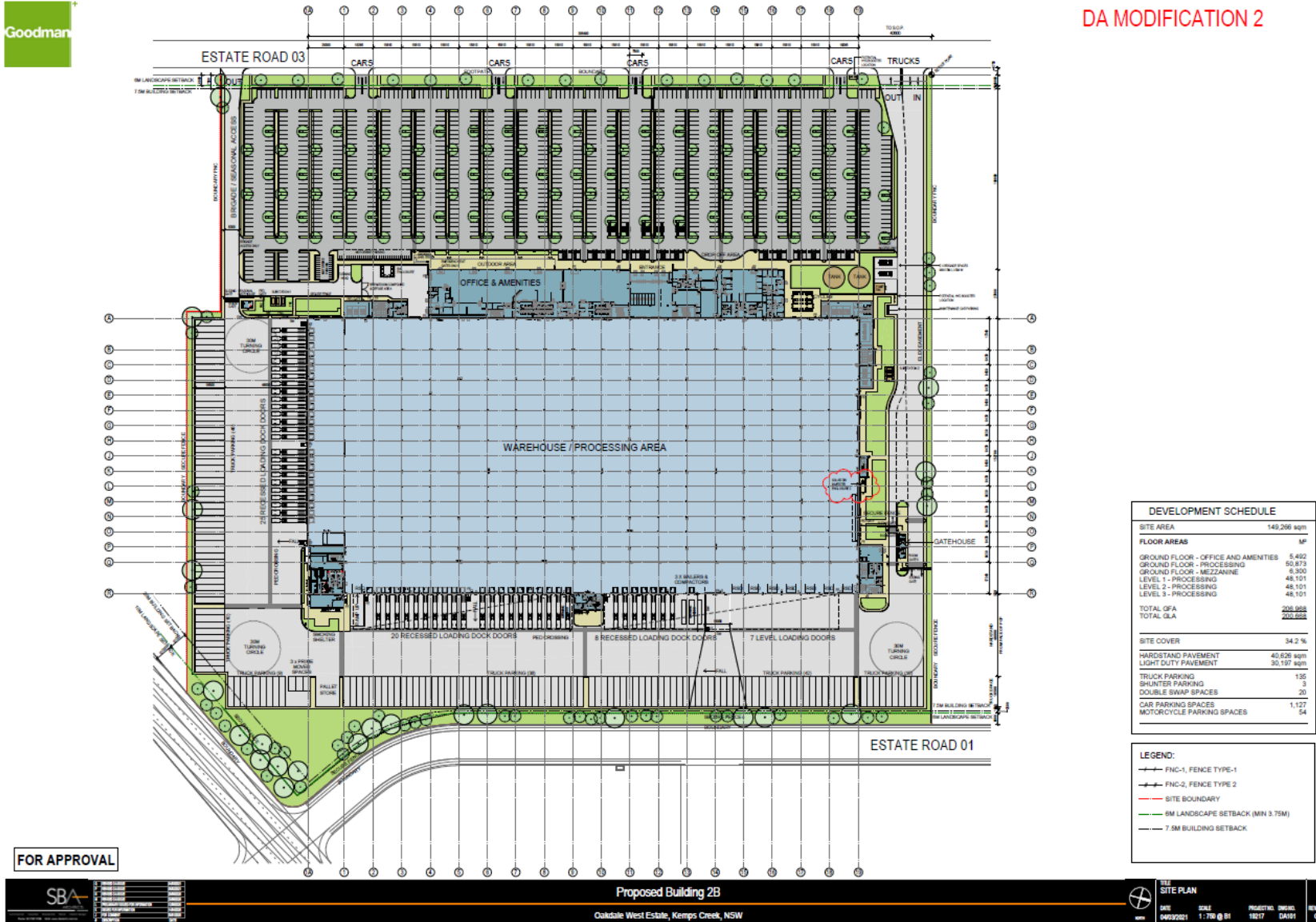


Figure 2 Landscape and Ground Floor Plan (Mod 2 – Plan 1 of 4)



DA MODIFICATION 2

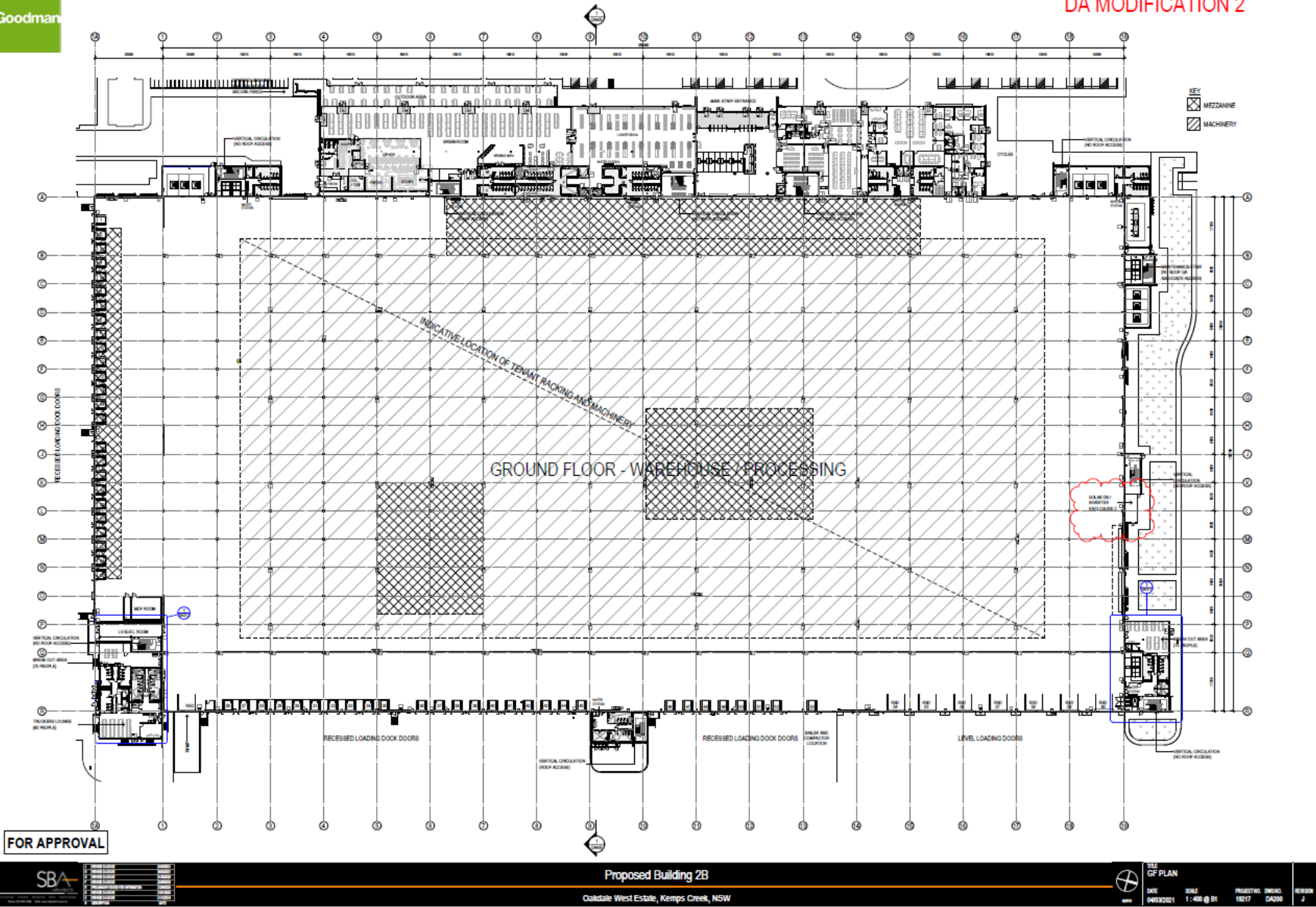


Figure 3 Typical Floor Plan (Mod 2 – Plan 2 of 4)

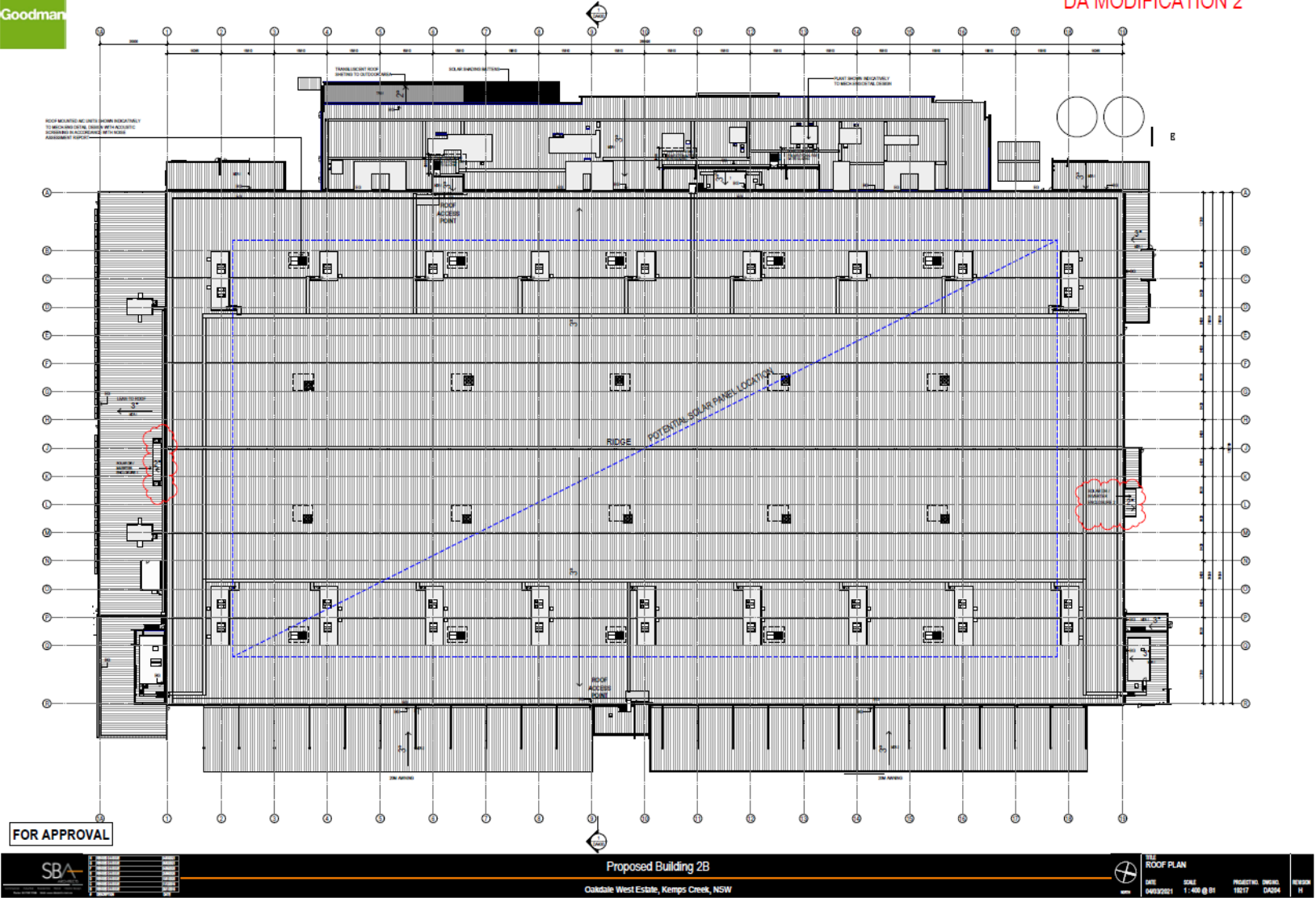


Figure 4 Roof Plan (Mod 2 – Plan 3 of 4)



DA MODIFICATION 2

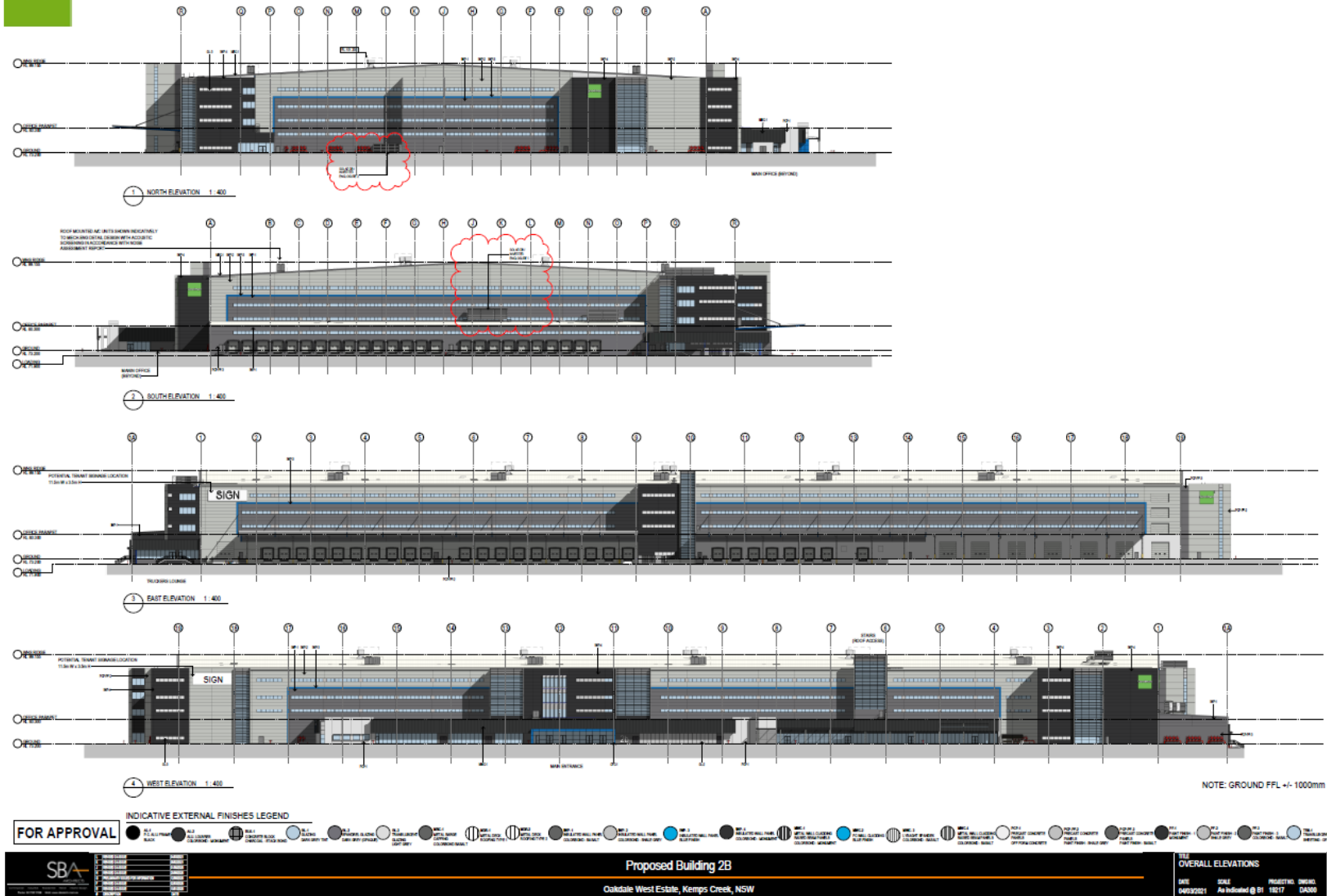


Figure 5 Elevations (Mod 2 – Plan 4 of 4)

**End of modification
(SSD-10937Mod-2)**