

Modification of Development Consent

Section 4.55(1A) of the *Environmental Planning and Assessment Act 1979*

As delegate of the Minister for Planning and Public Spaces, I approve the modification of the development consent referred to in Schedule 1, subject to the conditions in Schedule 2.



Chris Ritchie
Director
Industry Assessments

Sydney

10 March 2021

File: EF20/29553

SCHEDULE 1

Application Number:	SSD 7348
Applicant:	Goodman Property Services (Aust) Pty Ltd
Consent Authority:	Minister for Planning and Public Spaces
The Land:	Lot 1 DP 663937, Lot 2 DP 1215268, Lot 6 DP 229784, Lot 2 DP 84578, Lot 3 DP 85393, Lot 11 DP 1178389 and Lot 9 DP 1157476 2 Aldington Road, Kemp Creek NSW 2178 57-87 Lockwood Road, Erskine Park NSW 2759
Development:	A Concept Proposal including: <ul style="list-style-type: none">• concept layout of 22 warehouse buildings inclusive of dock offices and ancillary offices providing 476,000 square metres of gross lettable area, built over five development stages;• concept layout of development lots, internal roads, drainage, landscaping, noise walls, basins and biodiversity offsets; and• development controls. A Stage 1 Development including: <ul style="list-style-type: none">• bulk earthworks across all five stages including retaining walls and noise walls;• lead in services including but not limited to drainage, power, sewer, water and telecommunications;• service infrastructure to Precinct 1, including drainage, power, sewer, water and telecommunications;• construction and operation of three warehouse buildings inclusive of dock offices and ancillary offices in Precinct 1 (1A, 1B and 1C) providing 118,000 square metres of gross lettable area;• Western North-South Link Road and associated subdivision, basins and drainage;• estate roads 1, 2 and 6 and eastern part of road 7;• landscaping of Stage 1, the western boundary, Western North-South Link Road, estate roads 1, 2 and 6 and the eastern part of road 7, detention basins and the amenity lot

- subdivision of Stage 1 lots and road infrastructure including the services (substation) lot;
- stormwater drainage infrastructure for Lots 2A and 2B and all basins;
- temporary works to facilitate construction including but not limited to swales, haul road (construction access), landscaping and basins; and
- works including construction of traffic signals at Lenore Drive/Grady Crescent/WNSLR intersection; and
- works within Lot 9 DP1157476 including reconfiguration of car park, relocation of car park access on Lockwood Road, infrastructure, landscaping and all works associated with the WNSLR.

Date of Original Consent: 13 September 2019

Modification: SSD 7348 MOD 6 - Amendments to the approved Concept Plan and Stage 1 development including changes in Precincts 2A, 2C, 2D, 2E layouts, increase in building height control for Precinct 2A, and inclusion of construction Estate Road 8 as part of Stage 1 development.

SCHEDULE 2

This consent is modified as follows:

In Schedule 1

1. Replace the development description with the following:

A Concept Proposal including:

- concept layout of 18 warehouse buildings inclusive of dock offices and ancillary offices providing 556,824 square metres of gross lettable area, built over seven development stages;
- concept layout of development lots, internal roads, drainage, landscaping, noise walls, basins and biodiversity offsets; and
- development controls.

A Stage 1 Development including:

- bulk earthworks across all five stages including retaining walls and noise walls;
- lead in services including but not limited to drainage, power, sewer, water and telecommunications;
- service infrastructure to Precinct 1, including drainage, power, sewer, water and telecommunications;
- construction and operation of three warehouse buildings inclusive of dock offices and ancillary offices in Precinct 1 (1A, 1B and 1C) providing 88,867 square metres of gross lettable area;
- Western North-South Link Road and associated subdivision, basins and drainage;
- estate roads 1, 2, 6 and 8 and eastern part of road 7;
- landscaping of Stage 1, the western boundary, Western North-South Link Road, estate roads 1, 2, 6 and 8 and the eastern part of road 7, detention basins and the amenity lot
- subdivision of Stage 1 lots and road infrastructure including the services (substation) lot;
- stormwater drainage infrastructure for Lots 2A and 2B and all basins;
- temporary works to facilitate construction including but not limited to swales, haul road (construction access), landscaping and basins;
- works including construction of traffic signals at Lenore Drive/Grady Crescent/WNSLR intersection; and
- works within Lot 9 DP1157476 including reconfiguration of car park, relocation of car park access on Lockwood Road, infrastructure, landscaping and all works associated with the WNSLR.

In Definitions

2. Delete definition of development and replace with:

Development The development described in the EIS and RtS, including construction and operation of 18 warehouse buildings, offices and associated infrastructure, as modified by the conditions of this consent and shown on plans in Appendix 1, Appendix 2 and Appendix 3 and as modified by SSD 7348 MOD1, SSD 7348 MOD 2, SSD 7348 MOD 3, SSD 7348 MOD 4, SSD 7348 MOD 5 and SSD 7348 MOD 6.

3. Insert the following definition in alphabetical order:

SSD 7348 MOD 6 The section 4.55(1A) modification application prepared by Keylan Consulting Pty Ltd, titled 'Assessment Report Section 4.55(1A) Modification, SSD 7348 Modification 6', dated 10 February 2021.

In Schedule B

4. Delete Condition B9(f).

5. Delete Table 1 in Condition B9 and replace with the following:

Table 1: GLA Maximum for Concept Proposal

Land Use	Maximum GLA square metres (m ²)
Total Warehousing	529,625
Total Office	22,770
Other	4,429
Total GLA	556,824

Notes: Other includes but is not limited to the skybridge, gatehouse, dangerous goods store and energy complex in Building 1A.

6. Delete Condition B10 and replace with the following:

B10. The Applicant shall ensure the Concept Proposal is consistent with the development controls in **Table 2**:

Development Aspect	Control
Minimum building setbacks from:	
• Southern Link Road	17.15 m
• Western North-South Link Road	20 m
• Local estate roads	7.5 m
• Western site boundary	40 m
• Southern site boundary	20 m (excluding parking areas)
Rear boundary setbacks within the estate	5 m
Side boundary setbacks within the estate	0 m, subject to compliance with fire rating requirements
Height	15 m
- Building 1A	39 m
- Building 2A	18 m
- Building 2B	28 m
Minimum lot size	5,000 m ²
Minimum frontage	40 m (excluding cul-de-sacs) 35 m minimum lot width at the building line
Site coverage	Maximum of 65 per cent (excluding awnings)

7. Delete Condition B11 and replace with the following:

- B11. Notwithstanding the controls listed in **Table 2** in Condition B10, no warehouse building in the Concept Proposal, except Building 1A in Precinct 1 and Buildings 2A and 2B in Precinct 2, shall exceed a ridgeline height of 13.7 m, excluding roof mounted mechanical plant and solar panels.
8. Delete Condition B20 (a) and (b) and replace with the following:
- (a) the relevant provisions of *Planning for Bushfire Protection 2019*;
 - (b) the construction standards and asset protection zone requirements recommended in the Oakdale Industrial Estate - West Bushfire Protection Assessment, prepared by Australian Bushfire Protection Planners Pty Ltd, dated September 2016 and updated 13 January 2020, and the SSD-7348 (MOD 6) Bushfire Hazard Assessment prepared by Blackash Bushfire Consulting, dated 12 November 2020 ; and

In Schedule C

9. Delete Condition C12 (a) and (b) and replace with the following:
- (a) the relevant provisions of *Planning for Bushfire Protection 2019*;
 - (b) the construction standards and asset protection zone requirements recommended in the Oakdale Industrial Estate - West Bushfire Protection Assessment, prepared by Australian Bushfire Protection Planners Pty Ltd, dated September 2016 and updated 13 January 2020, and the SSD-7348 (MOD 6) Bushfire Hazard Assessment prepared by Blackash Bushfire Consulting, dated 12 November 2020 ; and

In Schedule D

10. Delete Condition D97 (a) and (b) and replace with the following:
- (a) the relevant provisions of *Planning for Bushfire Protection 2019*;
 - (b) the construction standards and asset protection zone requirements recommended in the Oakdale Industrial Estate - West Bushfire Protection Assessment, prepared by Australian Bushfire Protection Planners Pty Ltd, dated September 2016 and updated 13 January 2020, and the SSD-7348 (MOD 6) Bushfire Hazard Assessment prepared by Blackash Bushfire Consulting, dated 12 November 2020 ; and

In Appendix 1

11. Delete Table 7 and replace with the following:

Table 7: Schedule of Approved Plans – Concept Proposal

Architectural Plans prepared by SBA Architects			
Drawing	Title	Issue	Date
OAK MP 02	Estate Masterplan	D	29 January 2021
OAK MP 03	Western North South Link Road	B	30 July 2020
OAK MP 05	Precinct 1 Plan	F	30 July 2020
OAK MP 06	Precinct Plan	C	24 November 2020
OAK MP 07	Indicative Ultimate Lot Layout	B	18 November 2020
OAK MP 08	Site Analysis Plan	B	30 July 2020
OAK MP 11	Building Staging Plan (Indicative)	A	24 November 2020
OAK MP 12	Signage Precinct 1 Plan	B	30 July 2020
OAK MP 13	Fire Protection Plan	F	25 November 2020

OAK MP 14	Biodiversity Management Plan	B	9 November 2020
-----------	------------------------------	---	-----------------

Landscape Plans prepared by Scape Design Landscape Architecture			
Drawing	Title	Revision	Date
L.SK.000	Cover Sheet	B	8/01/21
L.SK.100	Landscape Master Plan – OWE MOD 6	B	8/01/21
L.SK.101	Street Trees & Planting Masterplan	B	8/01/21
L.SK.102	Planting Schedule – OWE MOD 5	B	8/01/21
L.SK.200	Landscape Sections – OWE MOD 5	A	26/10/20

Civil Plans prepared by AT&L			
Drawing	Title	Issue	Date
15-272-C0000	Cover Sheet	A9	20-10-20
15-272-C0001	General Arrangement Master Plan	A13	20-10-20
15-272-C0002	Existing Site Plan	A12	20-10-20
15-272-C0003	Precinct Plan	A13	20-10-20
15-272-C0004	Stage 1 SSD Approval Extents Sheet 1 of 2	A16	20-10-20
15-272-C0005	Stage 1 SSD Approval Extents Sheet 2 of 2	A11	20-10-20
15-272-C0006	Cut/Fill Plan	A11	20-10-20
15-272-C0007	Stormwater Drainage Catchment Plan (Pre-Developed)	A9	20-10-20
15-272-C0008	Stormwater Drainage Catchment Plan (Developed)	A9	20-10-20
15-272-C0009	Erosion and Sediment Control Master Plan	A12	20-10-20
15-272-C0010	Typical Sections Sheet 1	A11	20-10-20
15-272-C0011	Typical Sections Sheet 2	A9	20-10-20
15-272-C0012	Typical Sections Sheet 3	A10	20-10-20
15-272-C0013	Typical Sections Sheet 4	A8	20-10-20
15-272-C0020	Western North-South Link Road General Arrangement Plan	A10	20-10-20
15-272-C0021	Western North-South Link Road Stormwater Drainage Catchment Plan (Pre-Developed)	A9	20-10-20
15-272-C0022	Western North-South Link Road Stormwater Drainage Catchment Plan (Developed)	A9	20-10-20
15-272-C0023	Western North-South Link Road Proposed Land Acquisition Plan	A13	20-10-20
15-272-C1003	Precinct General Arrangement Plan	A15	20-07-20
15-272-C1004	Typical Site Sections Sheet 1 of 6	A11	20-07-20
15-272-C1005	Typical Site Sections Sheet 2 of 6	A10	20-07-20

12. Figure 1 is deleted and replaced with the following:

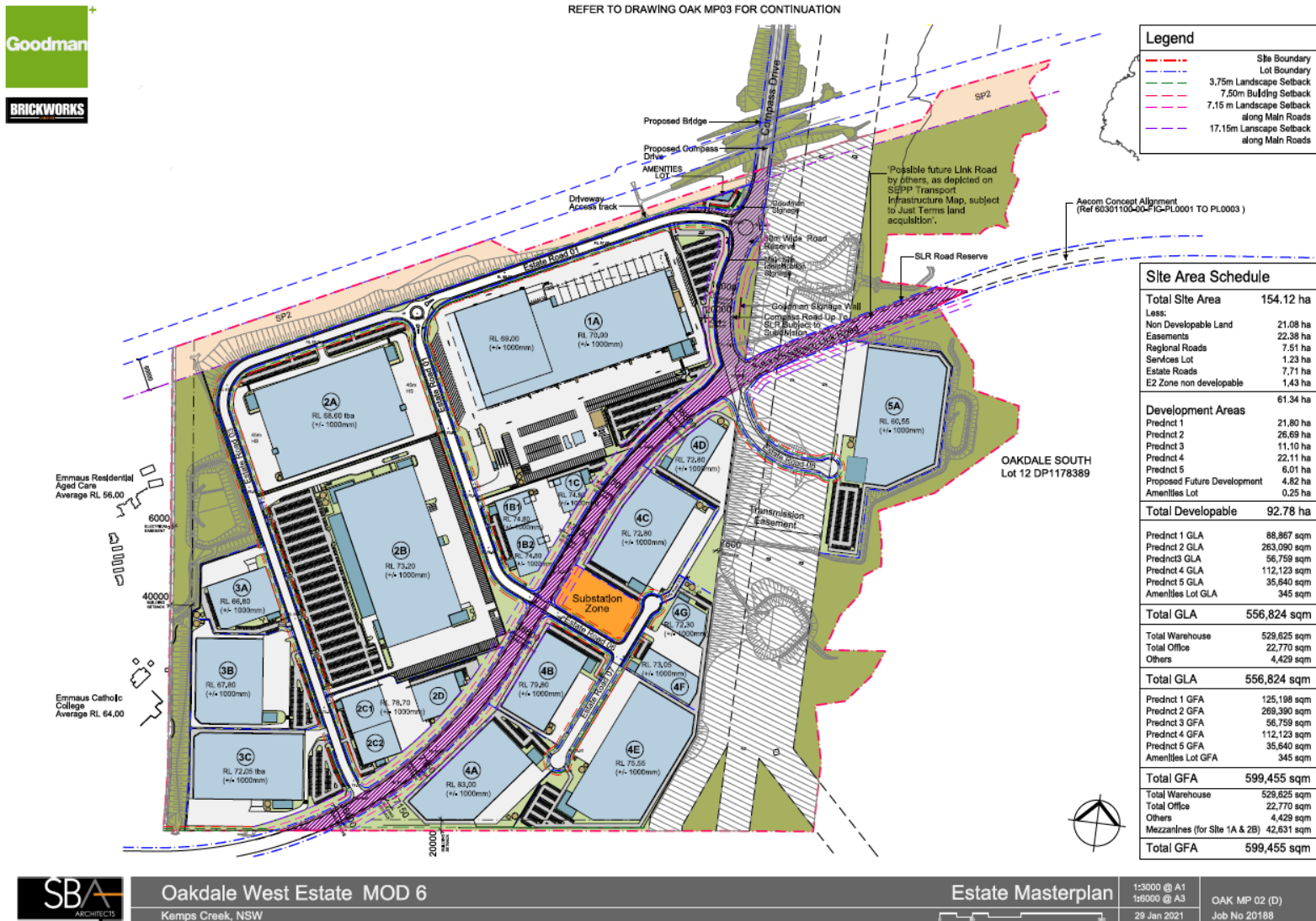


Figure 1: Concept Proposal Layout (MOD 6)

13. Figure 2 is deleted and replaced with the following:

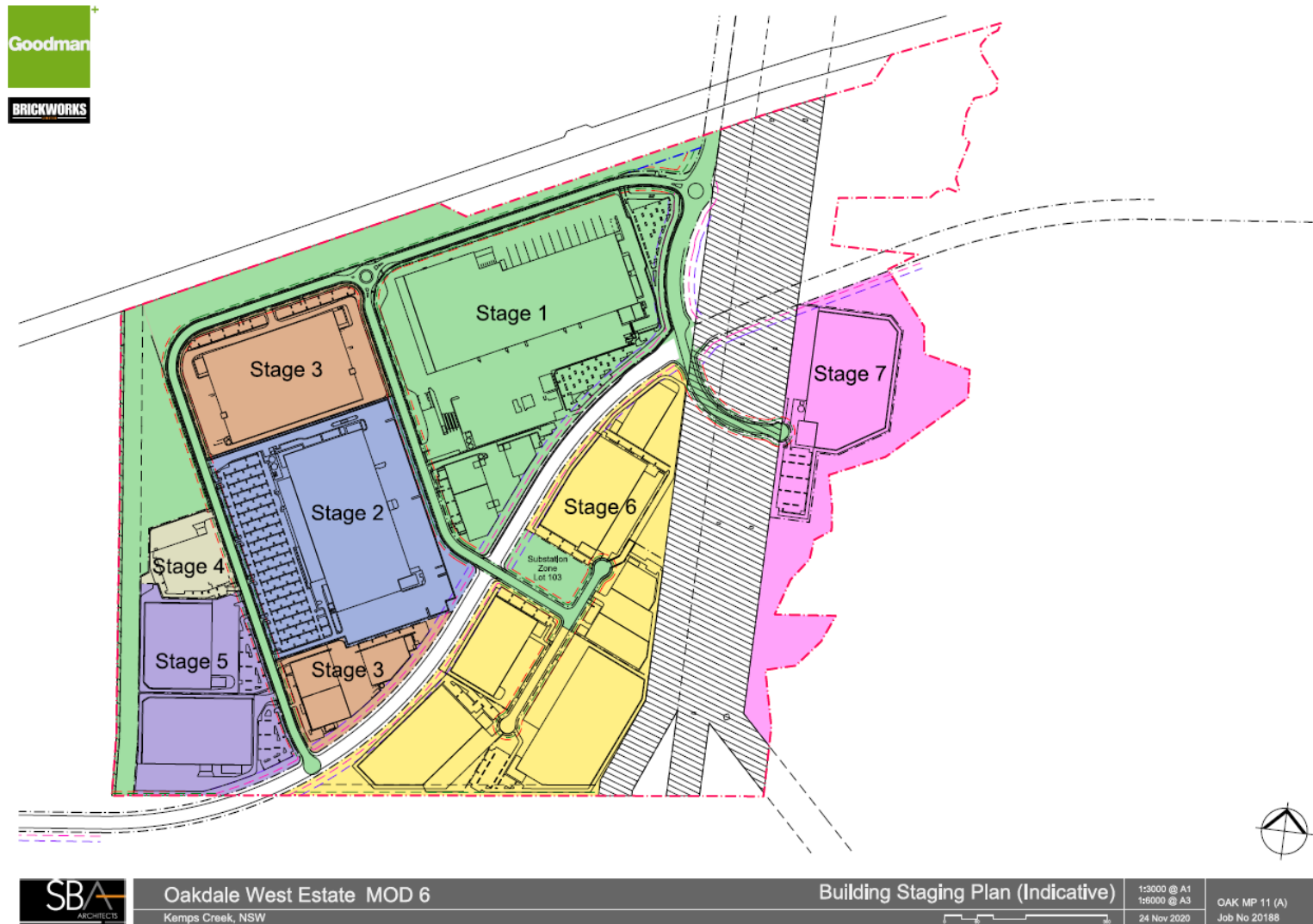


Figure 2: Staging Plan (MOD 6)

In Appendix 2

14. Table 8A is deleted and replaced with the following:

Table 8A: Schedule of Approved Plans – Stage 1 Development

Architectural Plans prepared by SBA Architects			
Drawing	Title	Issue	Date
OAK-1A-DA-10	Proposed Industrial Facility – Building 1A Site Plan	E	29 July 2020
OAK-1A-DA-11	Proposed Industrial Facility – Building 1A Roof Plan	A	13 July 2020
OAK-1A-DA-18	Proposed Industrial Facility – Building 1A Warehouse Plan	B	28 July 2020
OAK-1A-DA-18A	Proposed Industrial Facility – Building 1A Mezzanine Plan – 1	B	28 July 2020
OAK-1A-DA-18B	Proposed Industrial Facility – Building 1A Mezzanine Plan – 2	B	28 July 2020
OAK-1A-DA-18C	Proposed Industrial Facility – Building 1A Mezzanine Plan – 3	B	28 July 2020
OAK-1A-DA-18D	Proposed Industrial Facility – Building 1A Mezzanine Plan – 4	B	28 July 2020
OAK-1A-DA-18E	Proposed Industrial Facility – Building 1A Mezzanine Plan – 5	B	28 July 2020
OAK-1A-DA-18F	Proposed Industrial Facility – Building 1A Mezzanine Plan – 6	B	28 July 2020
OAK-1A-DA-25	Proposed Industrial Facility – Building 1A Energy Complex – 1	A	13 July 2020
OAK-1A-DA-28	Proposed Industrial Facility – Building 1A Stage 2 – Site Plan	E	29 July 2020
OAK-DA-DA00 B	Proposed Industrial Facility - Building 1B/1C - Cover page	B	4 November 2020
OAK-DA-DA01 B	Proposed Industrial Facility - Building 1B/1C – Perspectives – 1B1/1B2	B	4 November 2020
OAK-DA-DA02 B	Proposed Industrial Facility - Building 1B/1C – Perspectives – Office 1C	B	4 November 2020
OAK-DA-DA30 E	Proposed Industrial Facility - Building 1B/1C – Site Plan	E	29 January 2021
OAK-DA-DA31 E	Proposed Industrial Facility - Building 1B/1C – Roof Plan	E	5 November 2021
OAK-DA-DA32 D	Proposed Industrial Facility - Building 1B/1C – Office Plans 1B1	D	4 November 2020
OAK-DA-DA33 E	Proposed Industrial Facility - Building 1B/1C – Office Plans 1B2	E	29 January 2021
OAK-DA-DA33A E	Proposed Industrial Facility - Building 1B/1C – Office Plans 1C	E	5 November 2020
OAK-DA-DA34 D	Proposed Industrial Facility - Building 1B/1C – Elevations – Office 1B	D	4 November 2020
OAK-DA-D34A D	Proposed Industrial Facility - Building 1B/1C – Elevations – Office 1C	D	4 November 2020
OAK-DA-DA35 D	Proposed Industrial Facility - Building 1B/1C – Elevations – Warehouse 1B	D	4 November 2020
OAK-DA-DA36 D	Proposed Industrial Facility - Building 1B/1C – Elevations – Warehouse 1C	D	4 November 2020
OAK-DA-DA37 D	Proposed Industrial Facility - Building 1B/1C – Sections - Warehouse	D	4 November 2020
OAK 1B1C DA 40	Proposed Industrial Facility – Proposed 1B & 1C – Signage Plan	A	9 November 2020

Landscape Plans prepared by Scape Design Landscape Architecture			
Drawing	Title	Revision	Date
L.SK.00	Cover Sheet	S	17/7/20
L.SK.01	Landscape Master Plan	P	17/7/20
L.SK.02	Planting Plan	M	17/7/20
L.SK.03	Planting Schedule	M	8/7/20
L.SK.04	Character & Materials	N	8/7/20
L.SK.100	Landscape – Plan – Sheet 1	N	17/7/20
L.SK.101	Landscape – Plan – Sheet 2	N	17/7/20
L.SK.102	Landscape – Plan – Sheet 3	O	17/7/20
L.SK.103	Landscape – Plan – Sheet 4	O	17/7/20
L.SK.104	Landscape – Plan – Sheet 5	O	17/7/20
L.SK.105	Landscape – Detailed Plan – Sheet 1	M	17/7/20
L.SK.106	Landscape – Detailed Plan – Sheet 2	M	17/7/20
L.SK.200	Landscape – Sections – Sheet 1	K	8/7/20
L.SK.201	Landscape – Sections – Sheet 2	K	8/7/20
L.SK.202	Landscape – Sections – Sheet 3	K	17/7/20
L.SK.203	Landscape – Sections – Sheet 4	L	17/7/20
L.SK.204	Carpark Details	H	17/7/20

Civil Plans prepared by AT&L			
Drawing	Title	Revision	Date
15-272-C1000	Cover Sheet	A10	20-10-20
15-272-C1001	Drawing List	A10	20-10-20
15-272-C1002	General Notes	A10	20-10-20
15-272-C1003	Precinct General Arrangement Plan	A16	20-10-20
15-272-C1004	Typical Site Sections Sheet 1 of 6	A12	20-10-20
15-272-C1005	Typical Site Sections Sheet 2 of 6	A11	20-10-20
15-272-C1006	Typical Site Sections Sheet 3 of 6	A11	20-10-20
15-272-C1007	Typical Site Sections Sheet 4 of 6	A9	20-10-20
15-272-C1008	Typical Site Sections Sheet 5 of 6	A9	20-10-20
15-272-C1009	Typical Site Sections Sheet 6 of 6	A11	20-10-20
15-272-C1010	Typical Road Sections	A9	20-10-20
15-272-C1011	Contour Plan	A12	20-10-20
15-272-C1014	Bulk Earthworks Cut/Fill Plan	A13	20-10-20
15-272-C1015	Earthworks and Stormwater Drainage Plan Sheet 1 of 20	A10	20-10-20
15-272-C1016	Earthworks and Stormwater Drainage Plan Sheet 2 of 20	A10	20-10-20
15-272-C1017	Earthworks and Stormwater Drainage Plan Sheet 3 of 20	A10	20-10-20
15-272-C1018	Earthworks and Stormwater Drainage Plan Sheet 4 of 20	A10	20-10-20
15-272-C1019	Earthworks and Stormwater Drainage Plan Sheet 5 of 20	A10	20-10-20
15-272-C1020	Earthworks and Stormwater Drainage Plan Sheet 6 of 20	A10	20-10-20
15-272-C1021	Earthworks and Stormwater Drainage Plan Sheet 7 of 20	A10	20-10-20
15-272-C1022	Earthworks and Stormwater Drainage Plan Sheet 8 of 20	A10	20-10-20
15-272-C1023	Earthworks and Stormwater Drainage Plan Sheet 9 of 20	A12	20-10-20
15-272-C1024	Earthworks and Stormwater Drainage Plan Sheet 10 of 20	A12	20-10-20
15-272-C1025	Earthworks and Stormwater Drainage Plan Sheet 11 of 20	A10	20-10-20
15-272-C1026	Earthworks and Stormwater Drainage Plan Sheet 12 of 20	A10	20-10-20
15-272-C1027	Earthworks and Stormwater Drainage Plan Sheet 13 of 20	A10	20-10-20
15-272-C1028	Earthworks and Stormwater Drainage Plan Sheet 14 of 20	A10	20-10-20
15-272-C1029	Earthworks and Stormwater Drainage Plan Sheet 15 of 20	A12	20-10-20
15-272-C1030	Earthworks and Stormwater Drainage Plan Sheet 16 of 20	A12	20-10-20
15-272-C1031	Earthworks and Stormwater Drainage Plan Sheet 17 of 20	A10	20-10-20
15-272-C1032	Earthworks and Stormwater Drainage Plan Sheet 18 of 20	A10	20-10-20
15-272-C1033	Earthworks and Stormwater Drainage Plan Sheet 19 of 20	A10	20-10-20
15-272-C1034	Earthworks and Stormwater Drainage Plan Sheet 20 of 20	A10	20-10-20
15-272-C1040	Roadworks and Stormwater Drainage Plan Sheet 1 of 18	A11	20-10-20
15-272-C1041	Roadworks and Stormwater Drainage Plan Sheet 2 of 18	A12	20-10-20

15-272-C1042	Roadworks and Stormwater Drainage Plan Sheet 3 of 18	A11	20-10-20
15-272-C1043	Roadworks and Stormwater Drainage Plan Sheet 4 of 18	A10	20-10-20
15-272-C1044	Roadworks and Stormwater Drainage Plan Sheet 5 of 18	A10	20-10-20
15-272-C1045	Roadworks and Stormwater Drainage Plan Sheet 6 of 18	A10	20-10-20
15-272-C1046	Roadworks and Stormwater Drainage Plan Sheet 7 of 18	A10	20-10-20
15-272-C1047	Roadworks and Stormwater Drainage Plan Sheet 8 of 18	A10	20-10-20
15-272-C1048	Roadworks and Stormwater Drainage Plan Sheet 9 of 18	A9	20-10-20
15-272-C1049	Roadworks and Stormwater Drainage Plan Sheet 10 of 18	A4	20-10-20
15-272-C1050	Roadworks and Stormwater Drainage Plan Sheet 11 of 18	A4	20-10-20
15-272-C1051	Roadworks and Stormwater Drainage Plan Sheet 12 of 18	A4	20-10-20
15-272-C1052	Roadworks and Stormwater Drainage Plan Sheet 13 of 18	A4	20-10-20
15-272-C1053	Roadworks and Stormwater Drainage Plan Sheet 14 of 18	A4	20-10-20
15-272-C1054	Roadworks and Stormwater Drainage Plan Sheet 15 of 18	A4	20-10-20
15-272-C1055	Roadworks and Stormwater Drainage Plan Sheet 16 of 18	A4	20-10-20
15-272-C1056	Roadworks and Stormwater Drainage Plan Sheet 17 of 18	A1	20-10-20
15-272-C1057	Roadworks and Stormwater Drainage Plan Sheet 18 of 18	A1	20-10-20
15-272-C1060	Road Longitudinal Sections Sheet 1 of 7	A10	20-10-20
15-272-C1061	Road Longitudinal Sections Sheet 2 of 7	A10	20-10-20
15-272-C1062	Road Longitudinal Sections Sheet 3 of 7	A10	20-10-20
15-272-C1063	Road Longitudinal Sections Sheet 4 of 7	A10	20-10-20
15-272-C1064	Road Longitudinal Sections Sheet 5 of 7	A10	20-10-20
15-272-C1065	Road Longitudinal Sections Sheet 6 of 7	A4	20-10-20
15-272-C1066	Road Longitudinal Sections Sheet 7 of 7	A1	20-10-20
15-272-C1070	Western Boundary Layout and Sections	A11	20-10-20
15-272-C1071	Southern Boundary Layout and Sections	A9	20-10-20
15-272-C1080	Bio-Retention Basin 2 and 3 Detail Plan Sheet 1 of 2	A10	20-10-20
15-272-C1081	Bio-Retention Basin 2 and 3 Detail Plan Sheet 2 of 2	A9	20-10-20
15-272-C1082	Bio-Retention Basin 4 Detail Plan Sheet 1 of 2	A8	20-10-20
15-272-C1083	Bio-Retention Basin 4 Detail Plan Sheet 2 of 2	A10	20-10-20
15-272-C1084	Bio-Retention Basin 5 Detail Plan	A10	20-10-20
15-272-C1086	Stormwater Drainage Catchment Plan (Pre-developed)	A9	20-10-20
15-272-C1087	Stormwater Drainage Catchment Plan (Post-developed)	A9	20-10-20
15-272-C1090	Retaining Wall General Arrangement Plan	A13	20-10-20
15-272-C1091	Retaining Wall Profiles Sheet 1 of 9	A11	20-10-20
15-272-C1092	Retaining Wall Profiles Sheet 2 of 9	A10	20-10-20
15-272-C1093	Retaining Wall Profiles Sheet 3 of 9	A10	20-10-20
15-272-C1094	Retaining Wall Profiles Sheet 4 of 9	A10	20-10-20
15-272-C1095	Retaining Wall Profiles Sheet 5 of 9	A12	20-10-20
15-272-C1096	Retaining Wall Profiles Sheet 6 of 9	A11	20-10-20
15-272-C1097	Retaining Wall Profiles Sheet 7 of 9	A9	20-10-20
15-272-C1098	Retaining Wall Profiles Sheet 8 of 9	A9	20-10-20
15-272-C1099	Retaining Wall Profiles Sheet 9 of 9	A1	20-10-20
15-272-C1110	Stage 1 Services and Utilities Coordination Plan Sheet 1 of 6	A9	20-10-20
15-272-C1111	Stage 1 Services and Utilities Coordination Plan Sheet 2 of 6	A10	20-10-20
15-272-C1112	Stage 1 Services and Utilities Coordination Plan Sheet 3 of 6	A10	20-10-20
15-272-C1113	Stage 1 Services and Utilities Coordination Plan Sheet 4 of 6	A12	20-10-20
15-272-C1114	Stage 1 Services and Utilities Coordination Plan Sheet 5 of 6	A10	20-10-20
15-272-C1115	Stage 1 Services and Utilities Coordination Plan Sheet 6 of 6	A9	20-10-20
15-272-C1120	Existing Transgrid Overhead Electrical Cables Plan	A10	20-10-20
15-272-C1121	Existing Transgrid Overhead Electrical Cables and Longitudinal Sections	A9	20-10-20
15-272-C1122	Existing Transgrid Overhead Electrical Cables Typical Sections Sheet 1 of 2	A9	20-10-20
15-272-C1123	Existing Transgrid Overhead Electrical Cables Typical Sections Sheet 2 of 2	A9	20-10-20

15-272-C1130	Erosion and Sediment Control Plan Sheet 1 of 7	A10	20-10-20
15-272-C1131	Erosion and Sediment Control Plan Sheet 2 of 7	A10	20-10-20
15-272-C1132	Erosion and Sediment Control Plan Sheet 3 of 7	A10	20-10-20
15-272-C1133	Erosion and Sediment Control Plan Sheet 4 of 7	A11	20-10-20
15-272-C1134	Erosion and Sediment Control Plan Sheet 5 of 7	A10	20-10-20
15-272-C1135	Erosion and Sediment Control Plan Sheet 6 of 7	A9	20-10-20
15-272-C1136	Erosion and Sediment Control Plan Sheet 7 of 7	A9	20-10-20
15-272-C1137	Erosion and Sediment Control Details	A7	20-10-20
15-272-C2000	Cover Sheet	A9	20-07-20
15-272-C2001	Drawing List	A9	20-07-20
15-272-C2002	General Notes	A9	20-07-20
15-272-C2003	General Arrangement Plan	A14	05-01-21
15-272-C2010	Siteworks and Stormwater Drainage Plan Sheet 1 of 14	A10	20-07-20
15-272-C2011	Siteworks and Stormwater Drainage Plan Sheet 2 of 14	A10	20-07-20
15-272-C2012	Siteworks and Stormwater Drainage Plan Sheet 3 of 14	A11	20-07-20
15-272-C2013	Siteworks and Stormwater Drainage Plan Sheet 4 of 14	A11	20-07-20
15-272-C2014	Siteworks and Stormwater Drainage Plan Sheet 5 of 14	A10	20-07-20
15-272-C2015	Siteworks and Stormwater Drainage Plan Sheet 6 of 14	A10	20-07-20
15-272-C2016	Siteworks and Stormwater Drainage Plan Sheet 7 of 14	A11	20-07-20
15-272-C2017	Siteworks and Stormwater Drainage Plan Sheet 8 of 14	A11	20-07-20
15-272-C2018	Siteworks and Stormwater Drainage Plan Sheet 9 of 14	A11	20-07-20
15-272-C2019	Siteworks and Stormwater Drainage Plan Sheet 10 of 14	A11	20-07-20
15-272-C2020	Siteworks and Stormwater Drainage Plan Sheet 11 of 14	A12	20-07-20
15-272-C2021	Siteworks and Stormwater Drainage Plan Sheet 12 of 14	A13	05-01-21
15-272-C2022	Siteworks and Stormwater Drainage Plan Sheet 13 of 14	A13	05-01-21
15-272-C2023	Siteworks and Stormwater Drainage Plan Sheet 14 of 14	A12	04-11-20
15-272-C2030	Pavement Plan	A14	05-01-21

In Appendix 6

15. Delete Figure 10 and replace with the following:



- | | |
|---------------------------|---------------------------|
| MOD 1 approved VMP | MOD 6 proposed VMP |
| Regeneration | Regeneration |
| Revegetation | Revegetation |

Oakdale West Estate

Figure 2. Proposed VMP extent



Figure 10: Stage 1 Vegetation Management Plan (MOD 6)

In Appendix 7

16. In Table 6, delete Other Environmental Issues and replace with the following:

Other Environmental Issues		
Flora and Fauna	Concept Proposal Stage 1 Development	<ul style="list-style-type: none"> • Preparation of a Flora and Fauna Management Plan for the site to inform the CEMP and OEMP as relevant to manage potential impacts to biodiversity during construction and operation. • Retained areas of native vegetation, including the Ropes Creek riparian corridor, will be rehabilitated and/or restored in accordance with the Vegetation Management Plan. • Other areas of the site including road batters, embankments and bio-retention basins will be planted with native plant species and turf species as specified in the Landscape Planting Schedule. • Ongoing maintenance and management of these areas in accordance with the provisions of both the Vegetation Management Plan and Landscape Management Plan.
Waterways and Riparian Lands		<ul style="list-style-type: none"> • Restoration and ongoing management of Ropes riparian corridor to be in accordance with the Vegetation Management Plan

**End of modification
(SSD 7348 MOD 6)**